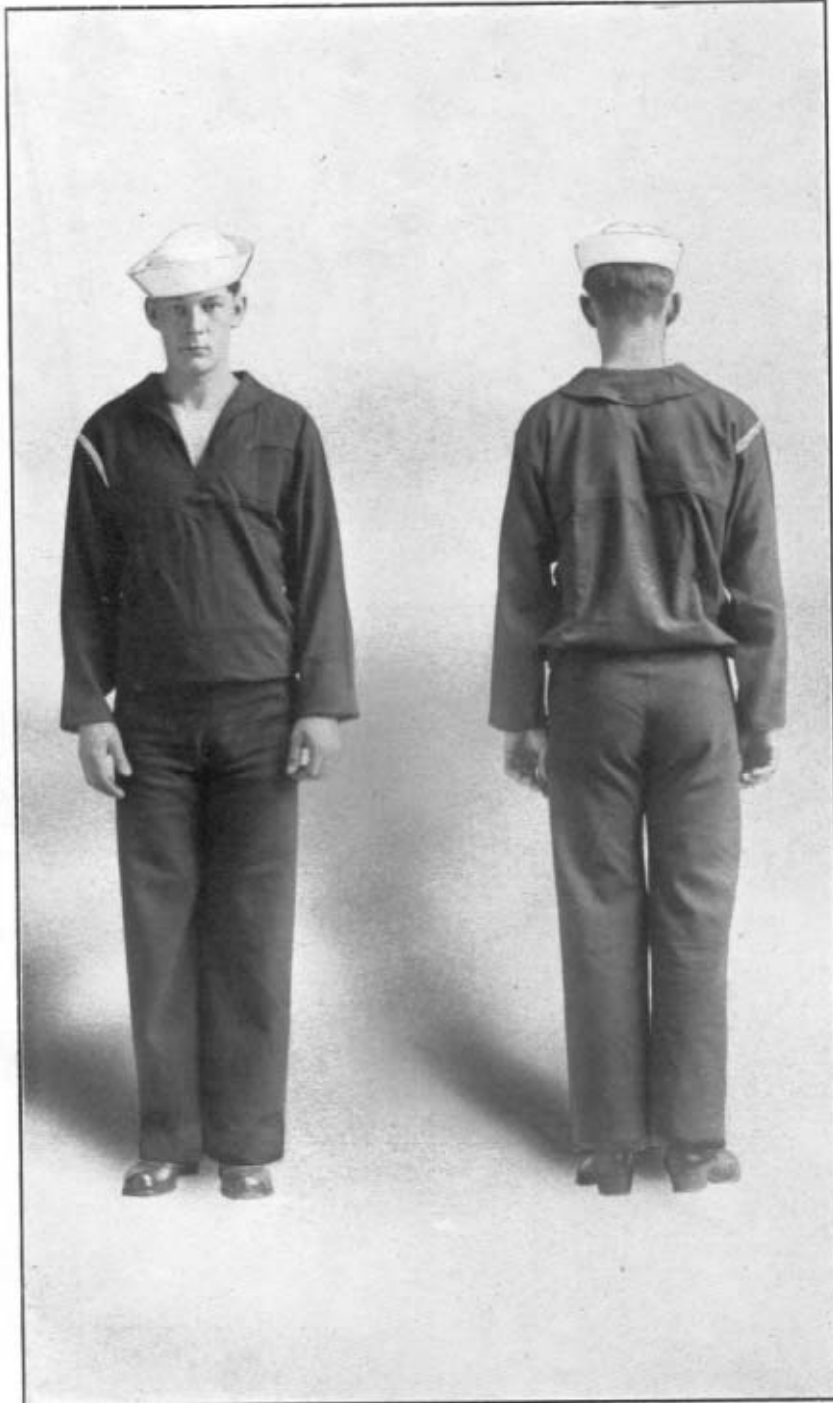


CHIEF PETTY OFFICER.

BOATSWAIN'S MATE, FIRST CLASS.

Third enlistment, seaman branch,
ex-apprentice.

BLUE DRESS.



BLUE UNDRESS WITH WHITE HAT.

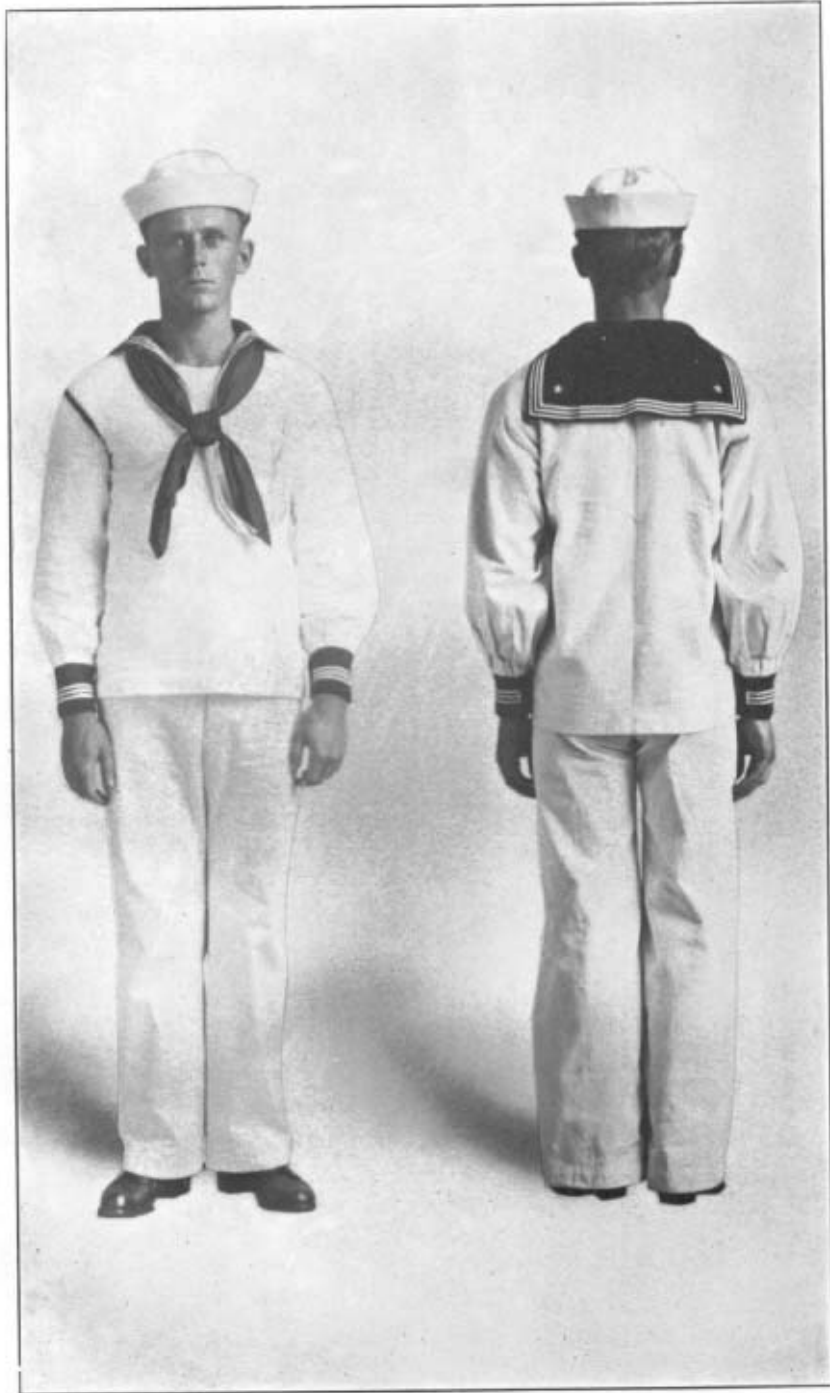
SEE CHAPTER 5.



CHIEF PETTY OFFICER.

Second enlistment—other than seaman branch.

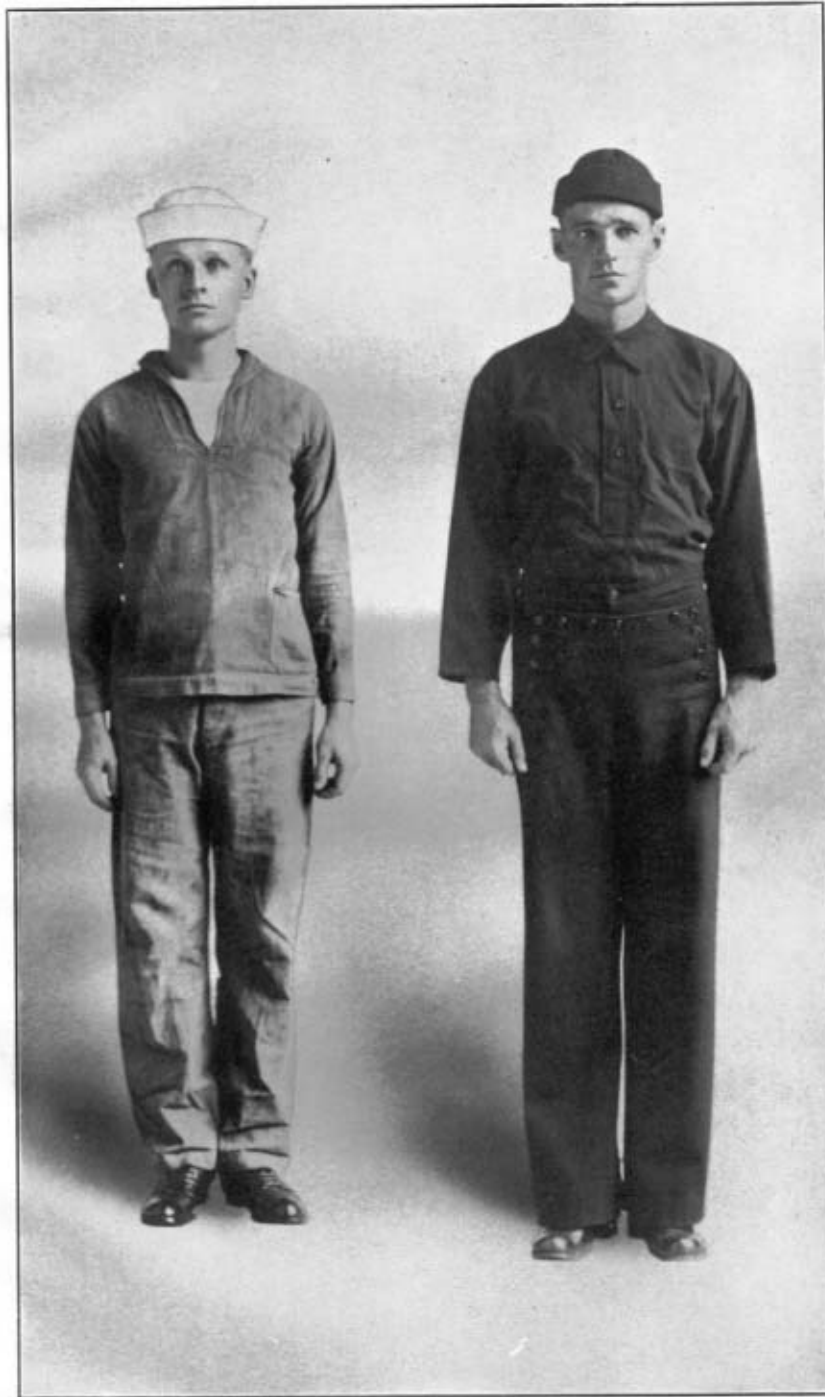
WHITE DRESS.



WHITE DRESS.

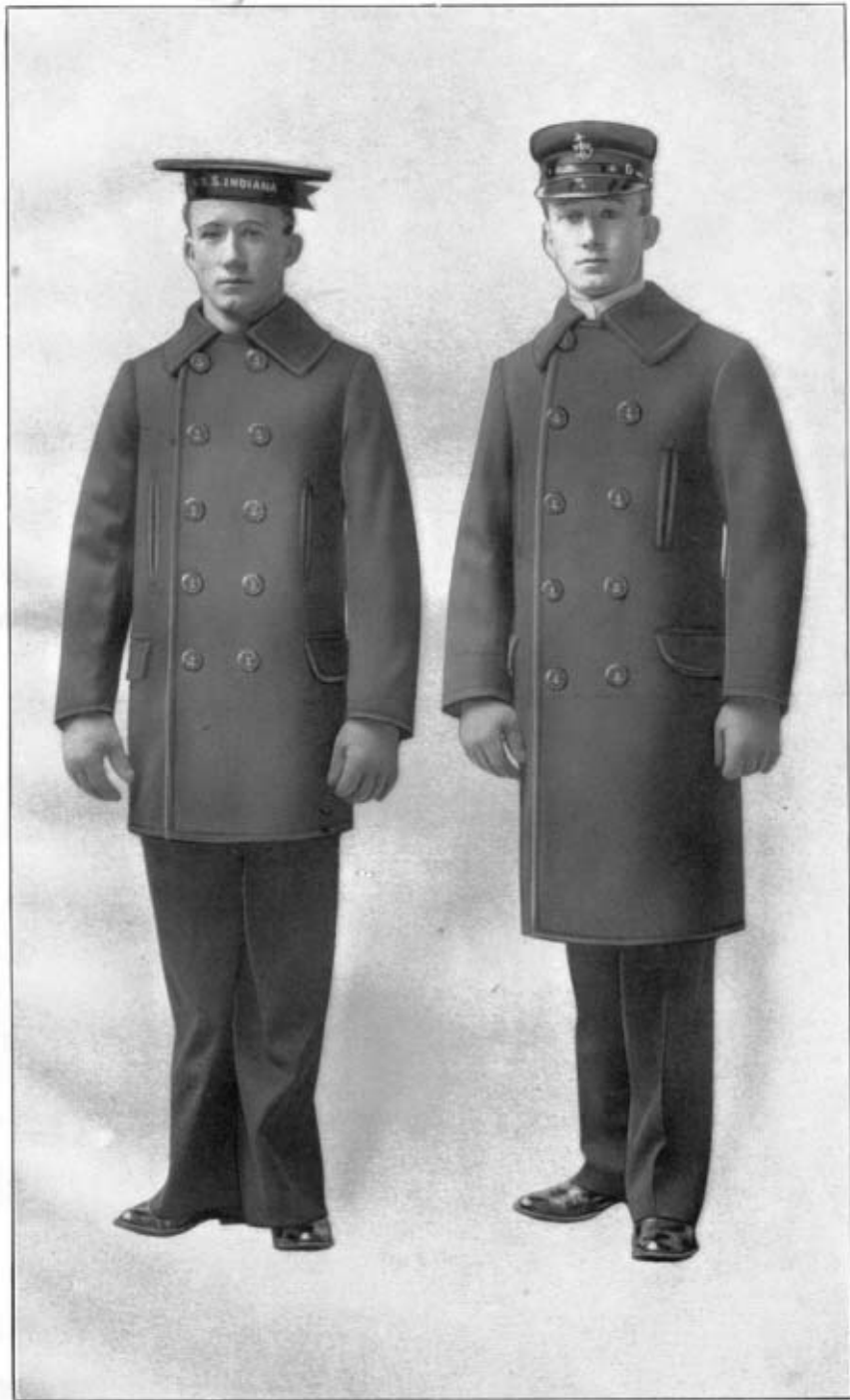


WHITE UNDRRESS.



DUNGAREES.

FLANNEL SHIRT AND WATCH CAP.



SEAMAN.

CHIEF PETTY OFFICER.

OVERCOAT.



SEAMAN.

PETTY OFFICER.

RAIN CLOTHES.





1



2



3



4



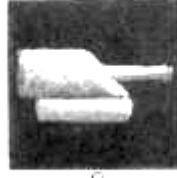
5



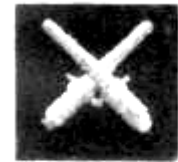
6



7



8



9



10



11



12



13



14



15



16



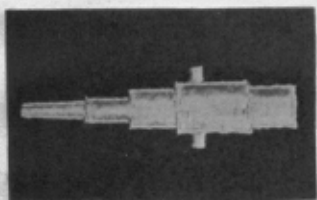
17



18



19



20



21



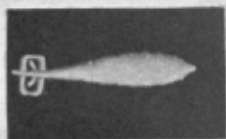
22



23



24



25



26

